

EC MAG Sensor

Mixed magnetic and eddy current probe

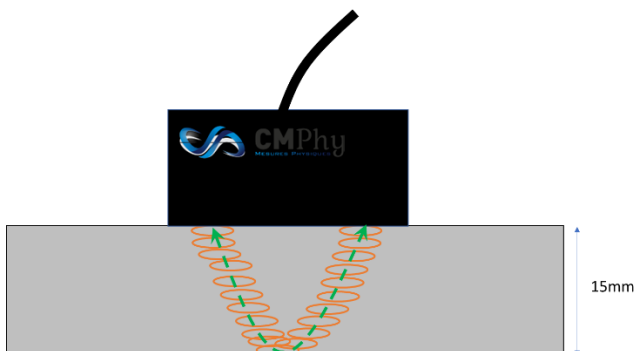
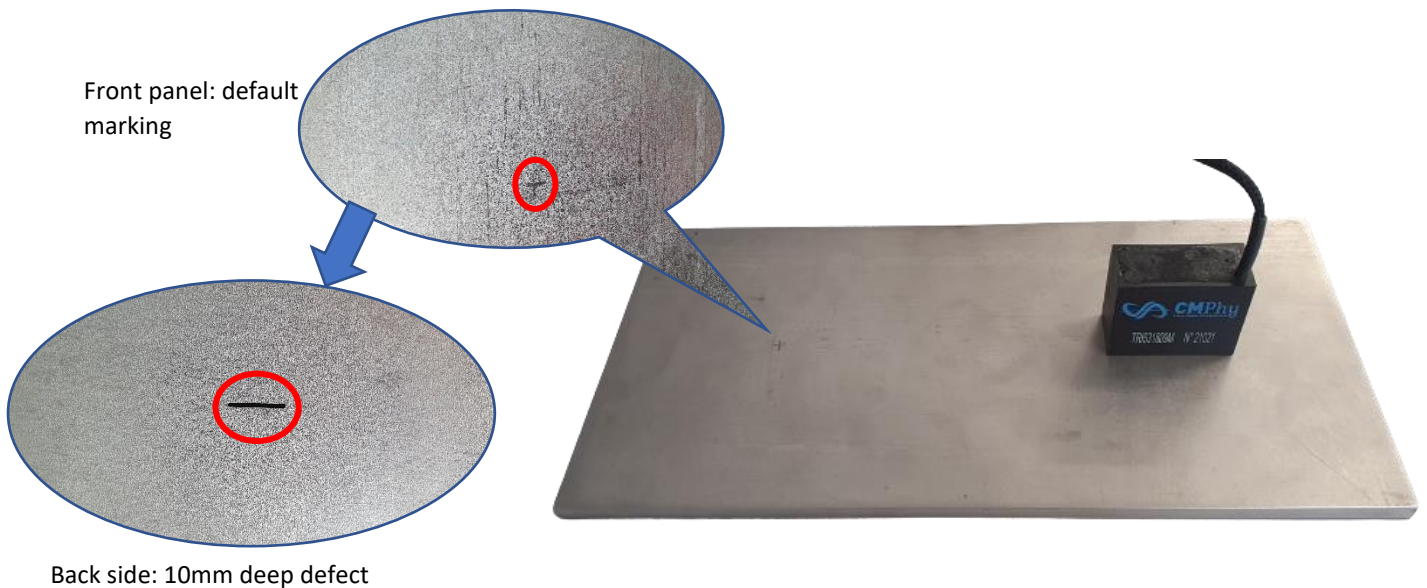
High detection depth (up to 15mm)

Technical specifications :

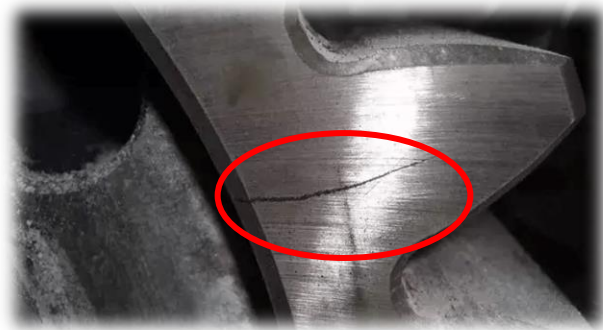
- Very high penetration probe
- **Eddy currents guided by a very low frequency magnetic field**
- BNC I/O connectors
- Compatible with all brands of CF devices
- Probe shielding adapted to NDT
- High sensitivity and resolution
- Polymer or aluminum probe body

Main applications :

- Probe in contact with the material, **air gap up to 5mm possible**
- Detection of surface and deep defects, up to 10mm
- Detection of defects such as cracking, corrosion
- Use on ferromagnetic/amagnetic materials
- Use on high temperature parts (~ 500°)



Guided Eddy Current



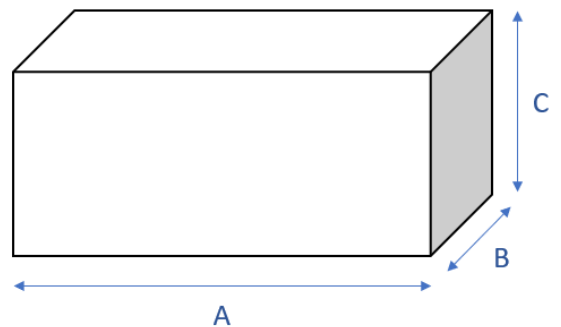
Detection of surface or deep cracks

REFERENCE	FREQUENCY OF USE	MEASURING MODE	DIMENSIONS* (mm) AxBxC
N21024-5	1-100 KHz	Transmit/Receive Absolute & Differential	10x6x8
N21024-6	1-100 KHz	Transmit/Receive Absolute & Differential	10.5x6.5x8.5
N21024-7	1-100 KHz	Transmit/Receive Absolute & Differential	11x7x9
N21024-9	1-10 KHz	Transmit/Receive Absolute & Differential	11.5x7.5x9.5
N21024-10	1-100 KHz	Transmit/Receive Absolute & Differential	13x9x11
N21024-12	1-100 KHz	Transmit/Receive Absolute & Differential	15x10x11
N21024-14	1-100 KHz	Transmit/Receive Absolute & Differential	17x12x14
N21024-16	1-100 KHz	Transmit/Receive Absolute & Differential	19x13x14
N21024-18	1-100 KHz	Transmit/Receive Absolute & Differential	21x14x16
N21024-19	1-100 KHz	Transmit/Receive Absolute & Differential	22x15x17
N21024-20	1-100 KHz	Transmit/Receive Absolute & Differential	23x16x18
N21024-21	1-100 KHz	Transmit/Receive Absolute & Differential	24x17x19
N21024-22	1-100 KHz	Transmit/Receive Absolute & Differential	25x18x20
N21024-25	1-100 KHz	Transmit/Receive Absolute & Differential	28x21x23
N21024-28	1-100 KHz	Transmit/Receive Absolute & Differential	31x24x27
N21024-30	1-100 KHz	Transmit/Receive Absolute & Differential	33x26x28
N21024-31	1-100 KHz	Transmit/Receive Absolute & Differential	34x27x29
N21024-32	1-100 KHz	Transmit/Receive Absolute & Differential	35x28x30
N21024-33	1-100 KHz	Transmit/Receive Absolute & Differential	36x29x31
N21024-34	1-100 KHz	Transmit/Receive Absolute & Differential	37x30x32
N21024-35	1-100 KHz	Transmit/Receive Absolute & Differential	38x31x33
N21024-36	1-100 KHz	Transmit/Receive Absolute & Differential	39x32x34
N21024-40	1-100 KHz	Transmit/Receive Absolute & Differential	43x36x38
N21024-42	1-100 KHz	Transmit/Receive Absolute & Differential	45x38x40
N21024-43	1-100 KHz	Transmit/Receive	46x39x41

		Absolute & Differential	
N21024-46	1-100 KHz	Transmit/Receive Absolute & Differential	49x42x44
N21024-49	1-100 KHz	Transmit/Receive Absolute & Differential	52x45x47
N21024-50	1-100 KHz	Transmit/Receive Absolute & Differential	53x46x48
N21024-55	1-100 KHz	Transmit/Receive Absolute & Differential	58x51x53
N21024-56	1-10 KHz	Transmit/Receive Absolute & Differential	59x52x54
N21024-58	1-100 KHz	Transmit/Receive Absolute & Differential	61x54x56
N21024-60	1-100 KHz	Transmit/Receive Absolute & Differential	63x56x58
N21024-64	1-100 KHz	Transmit/Receive Absolute & Differential	67x60x62
N21024-65	1-100 KHz	Transmit/Receive Absolute & Differential	68x61x63
N21024-70	1-100 KHz	Transmit/Receive Absolute & Differential	73x66x67
N21024-80	1-100 KHz	Transmit/Receive Absolute & Differential	83x76x77
N21024-100	1-100 KHz	Transmit/Receive Absolute & Differential	103x96x97

*Possibility of making custom probes

**Possibility of designing housings in different materials (plastic, aluminum...)



F = 1-10 KHz	EMISSION REEL (small format to large format)	REEL RECEPTION (small format to large format)
Z (Ω)	40 to 74	5 to 15
Phase°	65 to 110	45 to 82
L (mH)	5 to 12	0.5 to 2.1
R (ohmic in Ω)	2 to 8.5	2.5 to 6.5