

## CM-TUBE Sensor

High penetration eddy current probe for tubes

### Technical specifications :

- Very high penetration probe
- **Low & high frequency probe range 1 kHz to 1 MHz**
- BNC I/O connectors
- Compatible with all brands of CF devices
- Probe shielding adapted to NDT
- High sensitivity and resolution
- Polymer or aluminum probe body

### Main applications :

- Tube inspection (cracks, breaks, delaminations)
- Detection of material variation
- **Detection of surface and deep defects, up to 10mm**
- Use on ferromagnetic/amagnetic materials
- Use on high temperature parts (~ 500°)

Typical detectable defect: material cracking



Detectable surface defect



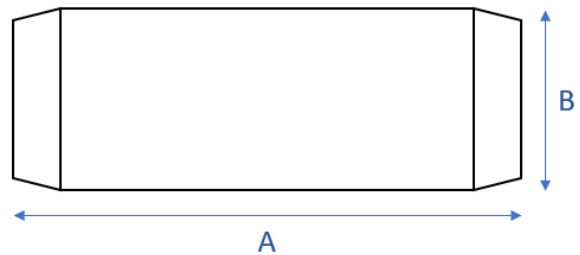
Material variation defect



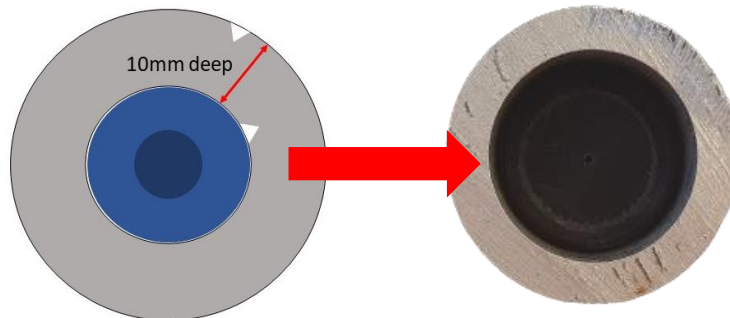
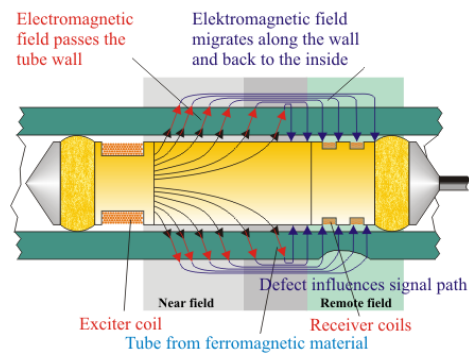
REFERENCE	FREQUENCE D'UTILISATION	MEASURING MODE	DIMENSIONS* (mm) AxB
TUBE LF 1-10	1 - 10 KHz	Transmit/Receive Absolute & Differential	10 to 300mm – 5 to 300mm
TUBE MF 10-100	10 - 100 KHz	Transmit/Receive Absolute & Differential	10 to 300mm – 5 to 300mm
TUBE HF 100-1000	100 - 1000 KHz	Transmit/Receive Absolute & Differential	10 to 300mm – 5 to 300mm

\*Possibility of making custom probes

\*\*possibility of designing housings in different materials (plastics...)



⇒ Different types of probes: near field and far field



F = 10 KHz	EMISSION REEL (small format to large format)	REEL RECEPTION (small format to large format)
Z (Ω)	350 to 1000	400 to 1200
Phase°	60 to 90	60 to 90
L (mH)	3 to 30	3 to 35
R (ohmique en Ω)	50 to 300	80 to 400