

CM-PEN Sensor

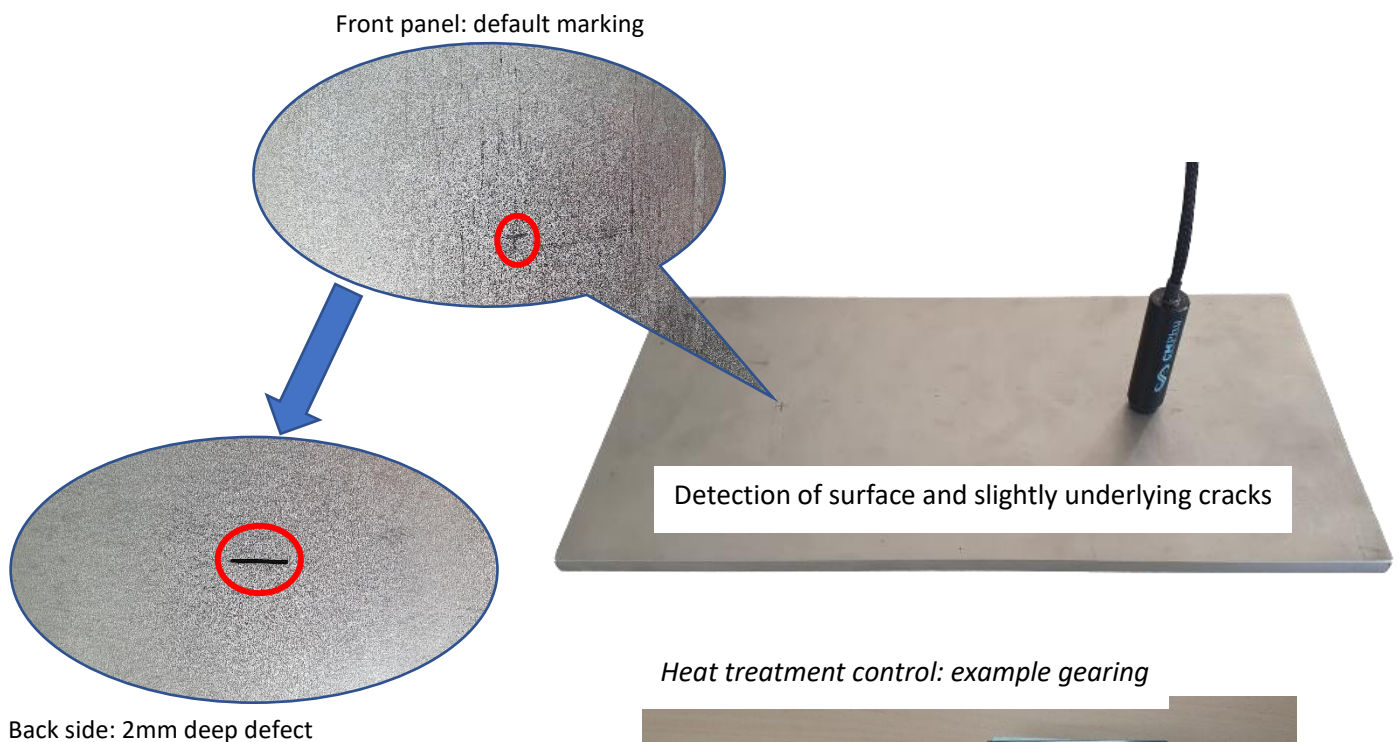
High resolution surface eddy current sensor

Technical specifications:

- **High eddy current surface probe**
- BNC I/O connectors
- Probe shielding suitable for NDT
- High sensitivity and resolution
- Polymer or aluminum probe body

Main applications :

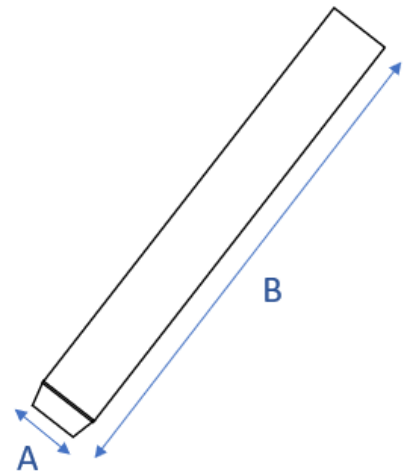
- **Detection of fine cracks**
- **Control of sheets, tubes, teeth, tracks**
- **Detection of surface and slightly underlying defects (1 to 3mm)**
- Use on ferromagnetic/amagnetic materials
- **Measurement of clearance between 2 parts, distance variation**
- **Detection of grinding burns, surface and heat treatment variations**



REFERENCE	FREQUENCY OF USE	MEASURING MODE	DIMENSIONS* (mm) AxB
PEN LF 1-10	1 to 10 kHz	Transmit/Receive Absolute & Differential	Diameter A : 5 to 50mm
PEN MF 10-100	10 to 100 kHz	Transmit/Receive Absolute & Differential	Diameter A : 3 to 30mm
PEN HF 100-5000	100 to 5000 kHz	Transmit/Receive Absolute & Differential	Diameter A : 1 to 20mm

*Possibility of making custom probes

**possibility of designing housings in different materials (plastics...)



F = 10 KHz	EMISSION REEL (small format to large format)	REEL RECEPTION (small format to large format)
Z (Ω)	50 to 250	100 to 400
Phase°	60 to 90	60 to 90
L (mH)	0.5 to 20	0.7 to 30
R (ohmic in Ω)	5 to 30	7 to 45

