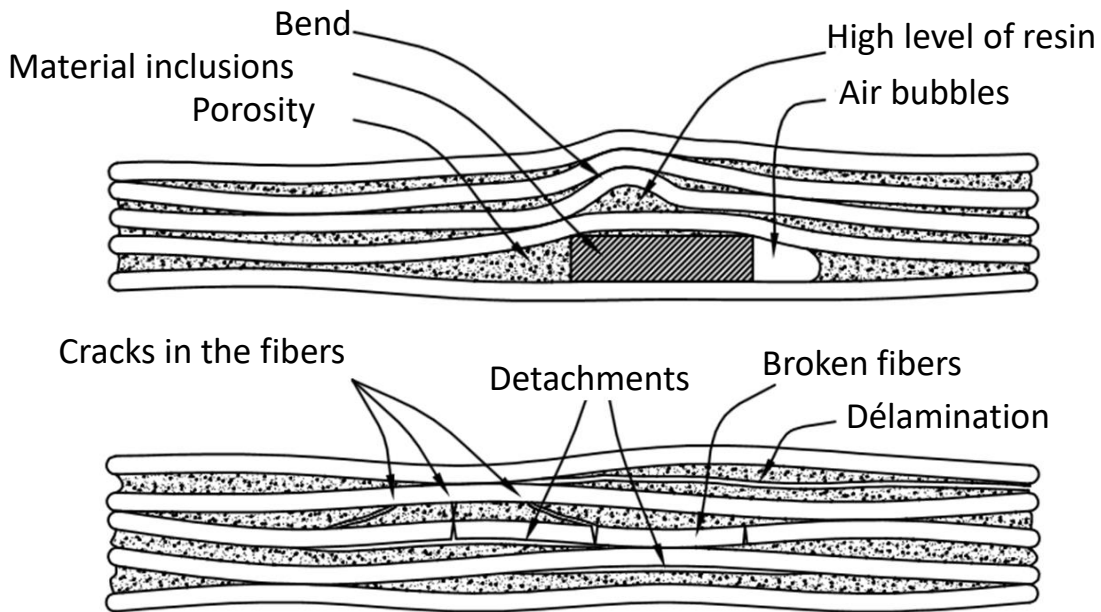


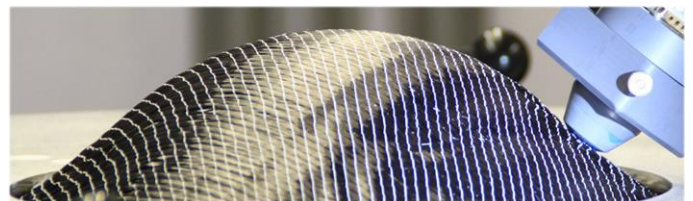
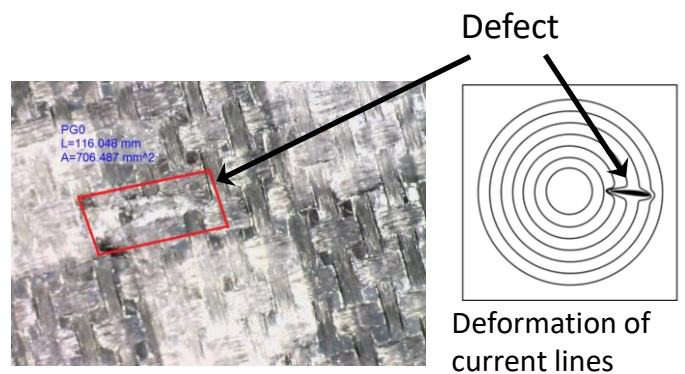
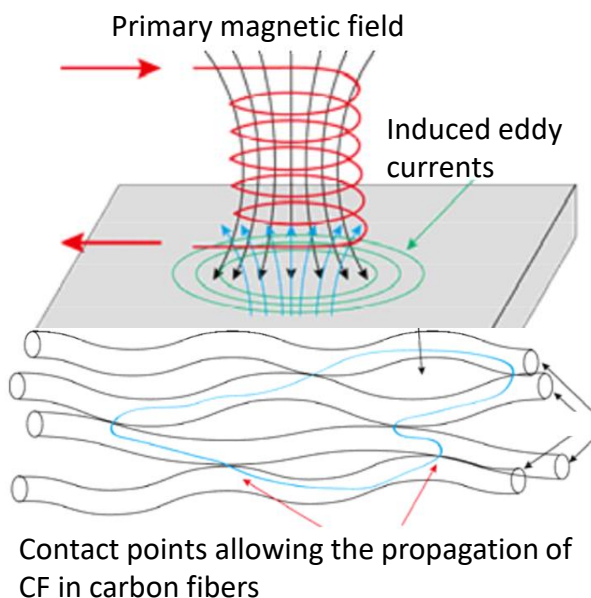
Non Destructive Analysis of Carbon Composites

Detection of defects within the composite



AND and CND methods developed and used

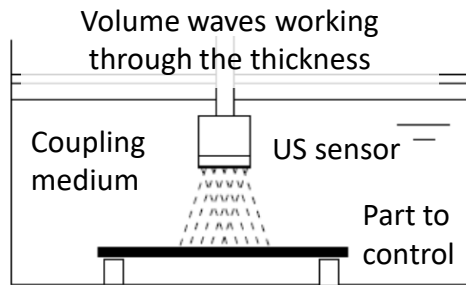
Eddy Current (EC)



Non Destructive Analysis of Carbon Composites

AND and CND methods developed and used

Ultrasonic methods

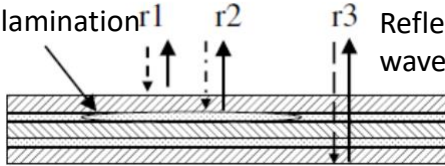


US sensors in film form working in surface waves and in thickness

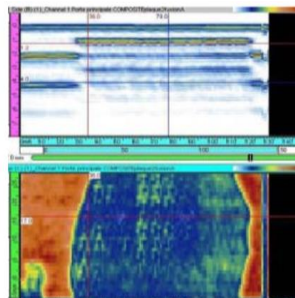
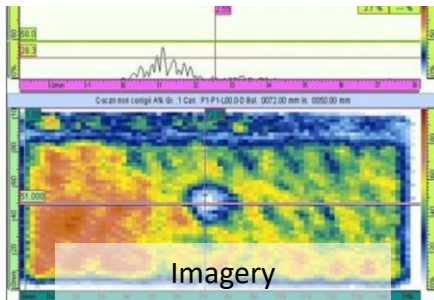


Possible integration within the structure

Delamination $r1$ $r2$ $r3$ Reflection of US waves at interfaces



Folding type fault



Material insert type defects

